

We invented the dermatoscope 30 years ago. Now we've done it again.

The new Dermatoscopes: DELTA 30 and DELTAone.



30
YEARS
1st DERMATOSCOPE





THE NEW HEINE DELTA 30 DERMATOSCOPE.

If there's something to discover, you'll be sure to see it.

Not only would our new high-end dermatoscope win any beauty pageant; it stands out due to the best imaging we've ever developed. Combined with a field of view measuring a veritable 30 millimetres and unprecedented colour rendering, in LED^{HQ} of course.

Polarisation provides glare-free and non-reflective working conditions. Above all else, it is comfortable to operate with its angled, ergonomic design and intuitive control. Feel free to take a look – you're in for a real discovery.

Crystal-clear image with the new achromatic HEINE optical system

Largest field of view of real 30mm (lens 32mm)

LED^{HQ}
LED NOW IN HEINE QUALITY.

Excellent colour rendering due to LED^{HQ}

Ergonomic handling thanks to angled product design



Digital documentation with the exclusive HEINE DERM app or the HEINE Cube System*



Table charger for DELTA 30

*Not available in all countries.



THE NEW HEINE DELTAone DERMATOSCOPE.

Mobility and quality have now become one.

Small on the outside, big on the inside – this mobile masterpiece is taking medical professionals by storm. The crystal-clear image was accomplished using the new achromatic HEINE optical system. What's more, it produces extraordinary colour rendering, due to the quality of our LED^{HQ}. Examinations are now particularly

comfortable due to the polarisation allowing doctors to work glare-free and without disrupting reflections. These three features – clarity, LED^{HQ} and non-reflective working – are what turn the DELTAone into a vital tool to carry in your pocket wherever you go.

Crystal-clear image with the new achromatic HEINE optical system

Fits into any pocket

Glare-free and non-reflective working conditions thanks to polarisation

LED^{HQ}
LED NOW IN HEINE QUALITY.

Excellent colour rendering due to LED^{HQ}

Digital documentation with the exclusive HEINE DERM app or the HEINE Cube System*



THE NEW DERMATOSCOPES: DELTA 30 AND DELTAone.

Seeing is believing.

Colours just as God created them. The DELTA 30 provides the best image quality of any dermatoscope we've ever built. Due to its small dimensions – and high diagnostic precision – the DELTAone is always a tool that users will gladly carry in their pocket. Their full

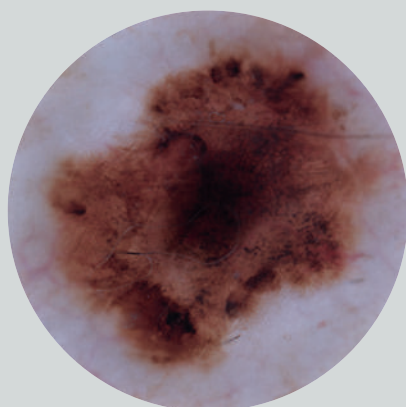
potential is revealed only by looking through them: the new achromatic HEINE optical systems provide a level of colour rendering that has never been seen before thanks to the specially developed LED^{HQ}.



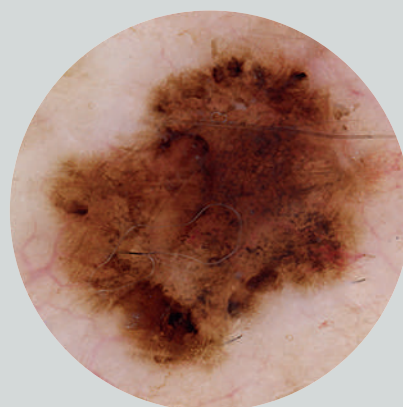
Conventional LED



LED^{HQ}
LED NOW IN HEINE QUALITY.



Conventional presentation



Presentation with one of the new DELTA Dermatoscopes

When it comes to the minutest of detail.

The new achromatic HEINE optical system, installed in the two new dermatoscopes of the DELTA series, provides optimum illumination right to the outer edges. The light is distributed homogeneously and evenly across the entire

field of view. The result is no disturbing reflections, shadows or bright or dark spots. With unseen clarity and an outstanding level of detail – regardless of the working distance. This feature is available in the new DELTA 30 with an impressive field of view size of real 30mm in diameter.

THE NEW DERMATOSCOPES: DELTA 30 AND DELTAone.

Simply digital. Digitally simple.

Both of the new dermatoscopes can also be combined with an iPhone* from version 6 upwards using the (also new) adapter. Our exclusive HEINE DERM App lets you create patient files, manage and archive pictures,

and save the serial documentation of progression over time. The HEINE DERM App is easy to install and the software is simple and intuitive to use.



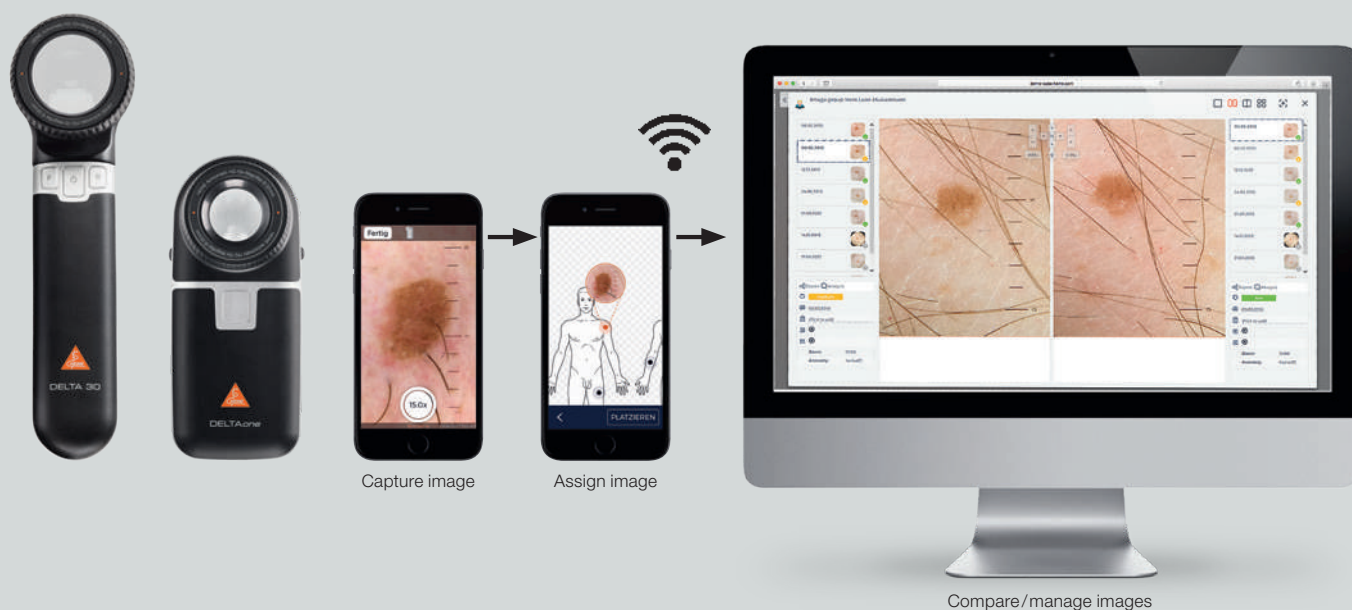
Alternatively, you can choose the **HEINE Cube System**** for image and data management. It manages images in chronological order, using many smart ideas and

partly exclusive functions. The highlight: the convenient WLAN. One Cube System is enough for up to 10 mobile HEINE dermatoscopes.

*The Apple iPhone is not included in the scope of delivery. Apple, the Apple logo and iPhone are trademarks of Apple Inc., registered in the U.S. and other countries. App Store is a service mark of Apple Inc. **Not available in all countries.

HEINE CUBE SYSTEM.

Quick, flexible and intuitive.



Our developers have worked particularly hard, to make your work particularly easy.

**The day is off to a good start:
Handy daily list.**

The Cube System will transfer all the patient data from your patient management system into a daily or task list at the touch of a button. In order of appointment, the doctor can now access the digital patient file from any computer. Daily lists can be created for different examination rooms and different doctors.

**Simple is the way to go:
Easy picture management.**

It's up to you whether you prefer full-body, individual, serial images or to comment on any of your images immediately or at a later time; the overview feature is unique. For example, when you photograph a patient's entire torso, detailed images can easily be placed on this overview photograph.

**Identifying suspects immediately:
Clear and insightful.**

The exclusive 'comparison wizard' function shows the series of pictures taken during previous appointments and helps to make differences far clearer.

Impressive: Wireless picture transfer in real time.

When you take a picture, it is instantly transferred to the HEINE Cube over a wireless network and then deleted from the memory. So it's available on the computer or tablet straight after being taken – and is even accessible to other users too.

**Maintaining an overview:
Smart ideas for serial documentation.**

You can directly compare current pictures with previous ones during the examination. Or to show four photos side by side to assist with illustrating progression over time. Or to create a slide-over solution, by placing one image on top of another. Or to perform a contour comparison, where you put a previous picture's contours over the current shot.

ORDER OVERVIEW

Let's get numerical.

DELTA 30 with contact plate with scale, USB cord with medical approved plug-in power supply, case	K-230.28.305
DELTAone Standard Edition (black-silver) with contact plate with scale, USB cord with medical approved plug-in power supply, case	K-210.28.305
DELTAone White Edition (white-silver) with contact plate with scale, USB cord with medical approved plug-in power supply, case	K-211.28.305
Contact plate with scale for DELTA 30	K-000.34.220
Small contact plate for DELTA 30. For the examination of difficult-to-access pigmented lesions.	K-000.34.206
Contact plate with scale for DELTAone	K-000.34.222
Small contact plate for DELTAone. For the examination of difficult-to-access pigmented lesions.	K-000.24.207
Table charger for DELTA 30	X-002.99.212
Mounting case smartphone for Apple iPhone 6/6s* suitable for DELTA 30/DELTAone	K-000.34.260
Mounting case smartphone for Apple iPhone 7/8* suitable for DELTA 30/DELTAone	K-000.34.261
Mounting case smartphone for Apple iPhone X/XS* suitable for für DELTA 30/DELTAone	K-000.34.262
Mounting case smartphone for Apple iPhone XR* suitable for DELTA 30/DELTAone	K-000.34.263
Universal Smartphone Connector. Suitable for many common smartphone mounting cases. Connector suitable for mobile phone cases with a smooth surface where the camera mustn't protrude from the case.	K-000.34.270
HEINE Cube System** , consists of: HEINE Cube hardware, HEINE Cube software, 3 hours remote support within the first week after the initial installation, software updates for a period of 2 years, 2 years hardware guarantee on the HEINE Cube (up to 10 clients)	O-160.00.002

*The Apple iPhone is not included in the scope of delivery. Apple, the Apple logo and iPhone are trademarks of Apple Inc., registered in the U.S. and other countries. App Store is a service mark of Apple Inc. **Not available in all countries.

QUALITY made in GERMANY.

As a global leader in the manufacture of primary diagnostic instruments with over 500 employees, HEINE Optotechnik has been a 100% family owned and managed company for more than 70 years. We continue to develop and manufacture HEINE instruments at our facilities in Germany, where we combine decades-long experience and craftsmanship with the most modern manufacturing technologies.

We are represented in over 120 countries around the world, with subsidiaries in Australia, the US and Switzerland as well as 3,000 representatives, importers and specialist dealers.

We look forward to hearing from you – and would like to know more about your opinions, desires and suggestions regarding our products.



■ HEINE SUBSIDIARY COMPANIES & REPRESENTATIVES



10/19. A-000.00.234 e



Имя HEINE характеризует продукцию высочайшего качества!

HEINE QUALITY
MADE IN GERMANY

"

-

"

<http://heine-med.ru/>
info@heine-med.ru

: (495) 902-59-26 .. , (495) 518-55-99

HEINE,

HEINE () -

!

