



2016

HEINE

MASTER CATALOGUE | MEDICAL





HEINE DELTA® 20 T Dermatoscope

Highest quality images and diagnostic flexibility

Toggle between polarised and non-polarised illumination modes. Conveniently alternate between polarised and non-polarised views with the press of a button – no exchange of contact plates necessary. Allows recognition of the “Blink Sign” when observing crystalline structures and presence of milia cysts, increasing diagnostic function.

LED in HQ: The new standard in LED illumination defining optimal light intensity, homogeneity and colour rendering for the most accurate diagnosis. Red is red, blue is blue. Colour temperature: 5000 K, Colour Rendering Index (CRI) >80 on a maximum scale of 100.

For more information see page 078.

Precision HEINE Optics. High quality, achromatic optical system provides unmatched sharpness and resolution. Focusing system provides for 10 x to 16 x magnification for recognition of even the smallest details and structures.



LED NOW IN HEINE QUALITY.

HEINE Dermatoscopes

LED HQ



DELTA20 T

LED HQ



NC1

LED HQ



mini3000 LED



mini3000

	Magnification			
Magnification	10 – 16x	6 – 9x	10x	10x
	Illumination			
LED HQ illumination	<input type="checkbox"/>	<input type="checkbox"/>	<input type="checkbox"/>	
XHL illumination				<input type="checkbox"/>
Toggle function	<input type="checkbox"/>			
	Examination mode			
Polarisation	<input type="checkbox"/>	<input type="checkbox"/>		
Immersion	<input type="checkbox"/>		<input type="checkbox"/>	<input type="checkbox"/>
contact	<input type="checkbox"/>	<input type="checkbox"/>	<input type="checkbox"/>	<input type="checkbox"/>
non-contact		<input type="checkbox"/>		
	Instrument size			
Professional	<input type="checkbox"/>			
Compact		<input type="checkbox"/>	<input type="checkbox"/>	<input type="checkbox"/>
	Available power sources			
Battery 2,5V	<input type="checkbox"/>	<input type="checkbox"/>	<input type="checkbox"/>	<input type="checkbox"/>
Rechargeable battery 2,5V		<input type="checkbox"/>	<input type="checkbox"/>	<input type="checkbox"/>
Rechargeable battery 3,5V	<input type="checkbox"/>			
	Accessories			
Contact plate with scale	<input type="checkbox"/>	<input type="checkbox"/>	<input type="checkbox"/>	<input type="checkbox"/>
Contact plate without scale	<input type="checkbox"/>		<input type="checkbox"/>	<input type="checkbox"/>
Small Contact plate	<input type="checkbox"/>		<input type="checkbox"/>	<input type="checkbox"/>
SLR Photo adaptor	<input type="checkbox"/>			
Page	078	081	083	084



HEINE DELTA® 20 T Dermatoscope

Highest Quality Images and Diagnostic Flexibility – with LED^{HQ}



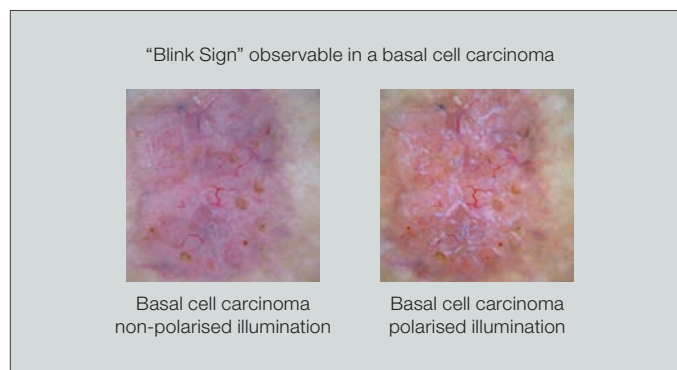
For dermatoscopic examination for early diagnosis of malignant melanoma. Also for the examination of non-melanocytic lesions, basal cell carcinoma and dermatofibroma.

- ∴ **Precision HEINE Optics.** High quality, achromatic optical system provides unmatched sharpness and resolution. Focusing system provides for 10x to 16x magnification for recognition of even the smallest details and structures.
- ∴ **Adjustable Eyepiece.** Individual focusing, range of correction approx. -6 to +6 dpt.
- ∴ **LED in HQ:** The new standard in LED illumination defining optimal light intensity, homogeneity and colour rendering for the most accurate diagnosis. Red is red, blue is blue. Colour temperature: 5,000K, Colour Rendering Index (CRI) >80 on a maximum scale of 100.
- ∴ **Optional small contact plate available.** Special small contact plate for difficult to access lesions.
- ∴ **Digital documentation capabilities.** Connect to major brand SLR digital cameras with HEINE digital camera lens system. Specially designed lenses integrate the camera and DELTA20 T optics together to provide the highest quality imaging possible.

- EXCLUSIVELY AT HEINE**
- Toggle function
 - High performance LEDs
 - High-resolution optics

DELTA20 T Dermatoscope Head	LED
with contact plate Ø 23mm with scale and dermatoscopy compendium, without handle	K-008.34.221
with contact plate Ø 23mm without scale and dermatoscopy compendium, without handle	K-008.34.222
DELTA20 T Dermatoscope Head without contact plate	K-008.34.220

- ∴ **Toggle between polarised and non-polarised illumination modes.**
Conveniently alternate between polarised and non-polarised views with the press of a button – no exchange of contact plates necessary. Allows recognition of the “Blink Sign” when observing crystalline structures and presence of milia cysts, increasing diagnostic function.



HEINE DELTA® 20 T Dermatoscope Sets



Set complete with: **DELTA 20 T Dermatoscope**
 contact plate 23mm Ø dia. with scale
 10 ml dermatoscopy oil
 dermatoscopy compendium
 hard case

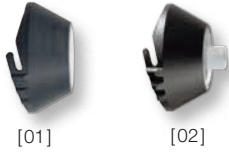


DELTA 20 T Sets	LED
BETA battery handle (2.5V)	K-262.10.118
▶ BETA 4 USB rechargeable handle with USB cord and plug-in power supply	K-262.28.388
▶ BETA 4 USB rechargeable handle	K-262.28.387
▶ BETA 4 NT rechargeable handle with NT 4 table charger	K-262.24.420

▶ New BETA 4 Handle range – for more information see pages 120 – 122.

Accessories

for the DELTA20 T Dermatoscope



[01]

[02]

Contact plates for DELTA 20 T

23mm dia. with scale [01]	K-000.34.216
23mm dia. without scale [01]	K-000.34.217
Small contact plate, 8mm dia. [02] for the examination of inaccessible lesions	K-000.34.205



Dermatology oil

(pack of 6 x 10ml). Reduces reflexes on the outer layers of skin.

K-000.34.005

SLR Photo adaptor

for Dermatoscope/digital SLR camera, with optics.
Wide Field of View, crisp image



for Canon	K-000.34.185
for Nikon	K-000.34.186
for Olympus	K-000.34.187



Adaptor cord

(1.3m) for instrument/handle

X-000.99.231



BETA Belt Clip

for BETA handle

X-000.99.008



Photo Accessory Set

includes SLR Photo adaptor, adaptor cord, distance ring and BETA Belt Clip

for Canon	K-000.34.190
for Nikon	K-000.34.191
for Olympus	K-000.34.192



HEINE® NC1 Dermatoscope

Non-Contact Dermatoscope with LED^{HQ}LED^{HQ}
LED NOW IN HEINE QUALITY.

∴ Non-contact examination

∴ LED in HQ

∴ Optional contact plate

Speed and diagnostic accuracy for the daily demands of a busy practice.

- ∴ **Polarised Illumination** for detailed views of the crystalline and vascular structures without any need for contact liquids.
- ∴ **Precision HEINE Optics with 6x magnification** – High-quality, aspherical optical system provides unmatched sharpness and resolution.
- ∴ **LED in HQ:** The new standard in LED illumination defining optimal light intensity, homogeneity and colour rendering for the most accurate diagnosis. Red is red, blue is blue. Colour temperature: 5,000K, Colour Rendering Index (CRI) >80, special index for red colours (R9) >35 on a maximum scale of 100.
- ∴ **Optional contact plate with additional magnification.** Adding the optional contact plate transforms the NC 1 to a traditional contact dermatoscope with increased magnification (9x) and a scale. The speed and ease of use of a non-contact dermatoscope combined with the detail and precision of a contact device, all in one instrument!

NC1 Dermatoscope	2.5V LED
NC 1 Dermatoscope head, without handle	D-008.78.130
with mini3000 battery handle (with batteries)	D-008.78.132
with mini3000 rechargeable handle (with rechargeable battery)	D-008.78.133
with contact plate, mini3000 battery handle (with batteries)	D-008.78.134
with contact plate, mini3000 rechargeable handle (with rechargeable battery)	D-008.78.135
Contact plate with scale	D-000.78.115

HEINE® NC1 Dermatoscope Sets



LED NOW IN HEINE QUALITY.

**NC1 Dermatoscope Set**

2.5V LED

- ▶ NC1 Dermatoscope head with contact plate with scale, mini3000 battery handle (with batteries), Zipper case

D-892.78.021**NC1 Dermatoscope and mini3000 LED F.O. Otoscope Set with rechargeable handles**

2.5V LED

- ▶ NC1 Dermatoscope head with contact plate with scale, mini3000 LED F.O. Otoscope head, 2 mini3000 rechargeable handles (with rechargeable batteries), miniNT Charger

D-890.11.022**NC1 Dermatoscope and mini3000 LED F.O. Otoscope Set with battery handles**

2.5V LED

- ▶ NC1 Dermatoscope head without contact plate, mini3000 LED F.O. Otoscope head, 2 mini3000 battery handles (with batteries), 5 each of 2.5 mm and 4 mm dia. AllSpec disposable tips, Zipper case

D-891.11.021

HEINE mini3000® LED Dermatoscope

with LED Illumination in HEINE Quality – LED^{HQ}

LED^{HQ}
LED NOW IN HEINE QUALITY.



- ∴ Maintenance-free pocket instrument
- ∴ Bright LED illumination
- ∴ Up to 10 hours operation time

Modern dermatoscope with maintenance-free LED illumination. Twice as bright as conventional Xenon Halogen dermatoscopes.

- ∴ **Maintenance-free**, no need to ever exchange the LED.
 - ∴ LED Thermal management for a **consistent light output throughout the whole working life**.
 - ∴ **LED in HQ:** The new standard in LED illumination defining optimal light intensity, homogeneity and colour rendering for the most accurate diagnosis. Red is red, blue is blue. Colour temperature: 4,000K, Colour Rendering Index (CRI) >95, special index for red colours (R9) >90 on a maximum scale of 100.
 - ∴ **100 % more light** compared to Xenon Halogen instruments.
 - ∴ **Exclusive Battery Performance Indicator:** When the instrument is switched on, the maximum light intensity is shown, then the light intensity is regulated down to the level that corresponds to the current charge status of the battery so you know when your batteries need changing.
 - ∴ **Exclusive fade-out function** reduces illumination intensity with battery level to let you know when to replace.
 - ∴ **Operation time up to 10 hours.** The batteries need to be changed less often and the rechargeable batteries last longer.
- ∴ **For further technical specifications, please see mini3000 Dermatoscope with XHL illumination on page 084.**

mini3000 LED Dermatoscope	2.5V LED
with contact plate, mini3000 battery handle with batteries and 10ml dermatoscopy oil	D-008.78.107
with contact plate with scale , mini3000 battery handle with batteries and 10ml dermatoscopy oil	D-008.78.109
with contact plate, without handle	D-008.78.106
with contact plate with scale , without handle	D-008.78.108

HEINE mini3000® LED Dermatoscope Set

LED^{HQ}
LED NOW IN HEINE QUALITY.



mini3000 LED Dermatoscope Set with contact plate without scale	2.5V LED
mini3000 LED Dermatoscope with contact plate without scale, 10ml dermatoscopy oil, mini3000 Battery handle with batteries, zipper case	D-887.78.021



mini3000 LED Dermatoscope Set with contact plate with scale	2.5V LED
mini3000 LED Dermatoscope with contact plate with scale, 10ml dermatoscopy oil, mini3000 Battery handle with batteries, zipper case	D-888.78.021

HEINE mini3000® Dermatoscope

A Dermatoscope in a handy pocket format with XHL illumination



∴ Modern pocket dermatoscope

∴ Solid metal construction

∴ 10x magnification

Modern pocket dermatoscope with XHL Xenon Halogen bulbs. Concentrated, bright light for uniform illumination with exact colour rendering. Unique, compact design with high quality optics. 10x magnification with focusing optics, metal instrument head. Can be used with the mini3000 handle system. Handle available in black and blue.

- ∴ **20,000 ON/OFF** switch cycles guaranteed.
- ∴ **High quality colour-neutral optic system** with achromatic lenses provides **distorsion-free edge-to-edge, sharp images** of the whole area under examination with **10x magnification**.
- ∴ **Different contact plates for the examination to choose from:** contact plates with and without scale which can be autoclaved.
- ∴ **Special small contact plate** for the examination of difficult to access lesions.
- ∴ Detailed dermoscopy compendium.
- ∴ **Replaceable batteries (Size AA)**, or optional rechargeable battery with mini NT table charger*.
- ∴ **2-piece handle and head.** Easy to maintain, flexible.
- ∴ **Award-winning design.** Maximum quality with minimum dimensions.

mini 3000 Dermatoscope	2.5V XHL
with contact plate, mini 3000 battery handle with batteries and 10 ml dermatoscopy oil	D-001.78.107
with contact plate with scale , mini 3000 battery handle with batteries and 10 ml dermatoscopy oil	D-001.78.109
with contact plate, without handle	D-001.78.106
with contact plate with scale , without handle	D-001.78.108
XHL Xenon Halogen spare bulb	X-001.88.109



*To upgrade to a rechargeable instrument, with mini NT table charger, please see page 125.

Accessories

for mini 3000 LED Dermatoscope and mini 3000 Dermatoscope



[01]



[02]

Contact plates

without scale [01]

D-000.78.116

with scale [01]

D-000.78.117

Small contact plate, 8 mm dia. [02]

for the examination of inaccessible lesions

K-000.34.008

Dermatoscopy oil

(pack of 6 x 10ml) [03]. Reduces reflexes on the outer layers of skin.

K-000.34.005



[03]

Имя HEINE характеризует продукцию высочайшего качества!

HEINE QUALITY
MADE IN GERMANY

"

-

"

<http://heine-med.ru/>
info@heine-med.ru

: (495) 902-59-26 .. , (495) 518-55-99

HEINE,

HEINE () -

!

